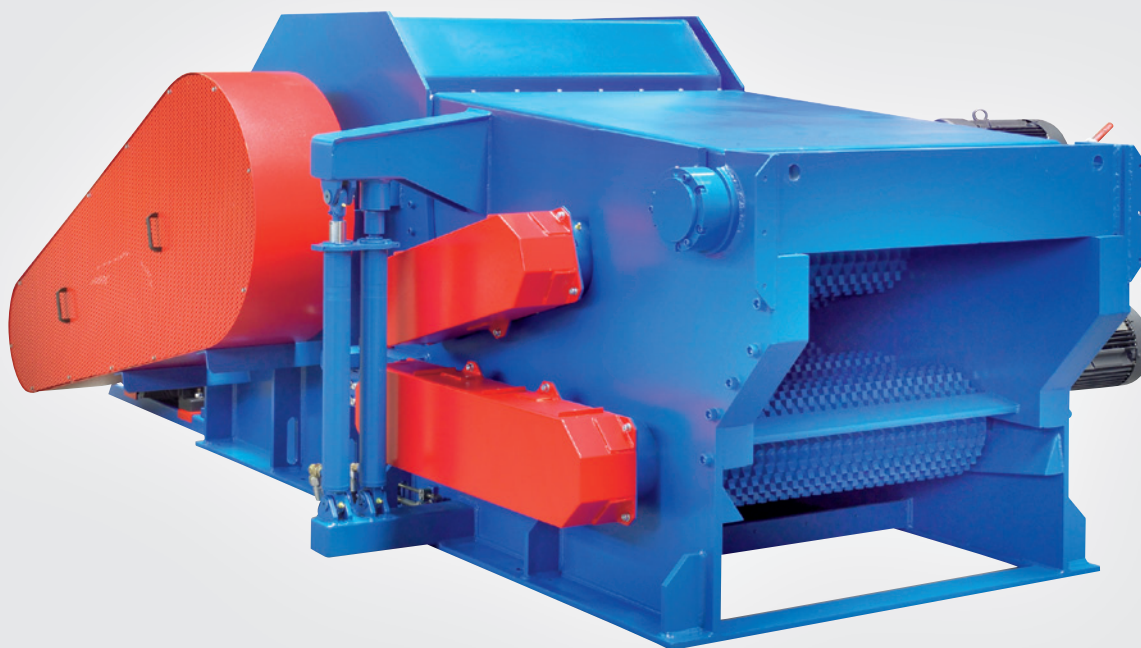


# VTH 30

TECHNOLOGY FOR A SUSTAINABLE TOMORROW



Shredding



## APPLICATION

For use in sawmills, chipboard and paper industry for the generation of high quality wood chips, and in medium-sized biomass power plants for the production of energy wood chips for thermal recovery.

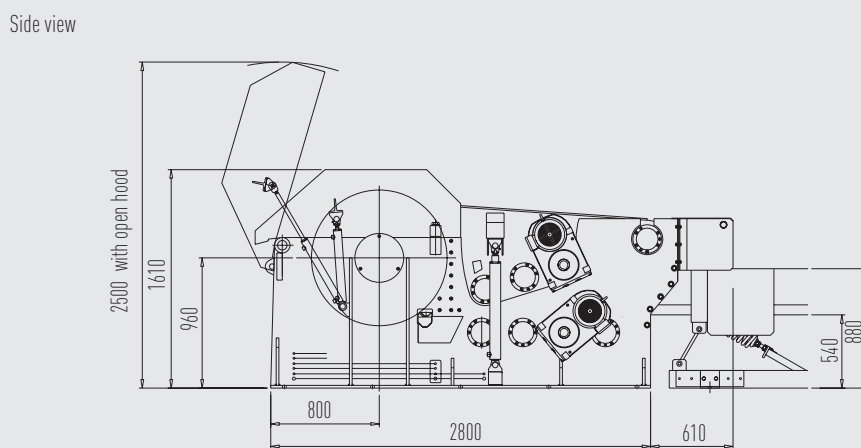
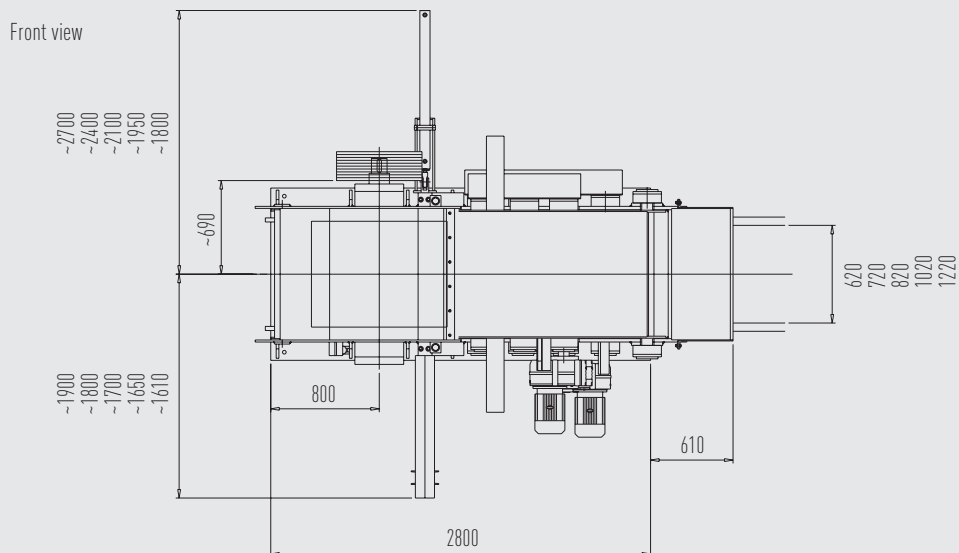
**Vecoplan**<sup>®</sup>

# VTH 30

TECHNOLOGY FOR A SUSTAINABLE TOMORROW



▲  
Shredding



## DETAILS

		VTH 75/30/7	VTH 105/30/7
Infeed opening	mm	750 x 300	1050 x 300
Infeed rollers	qty	7	7
Rotor diameter	mm	1000	1000
Number of tools	qty	2 - 4	2 - 4
Rotor speed	rpm	600	600
Chipping length	mm	5 - 30 *	5 - 30 *
Required motor power	kW	110 - 200	132 - 250
Capacity	stere/h	16 - 45 *	16 - 65 *
Weight approx.	t	10	13

Subject to technical changes without notice / Dated: 09/2010

\* Depending on input material and chipping length