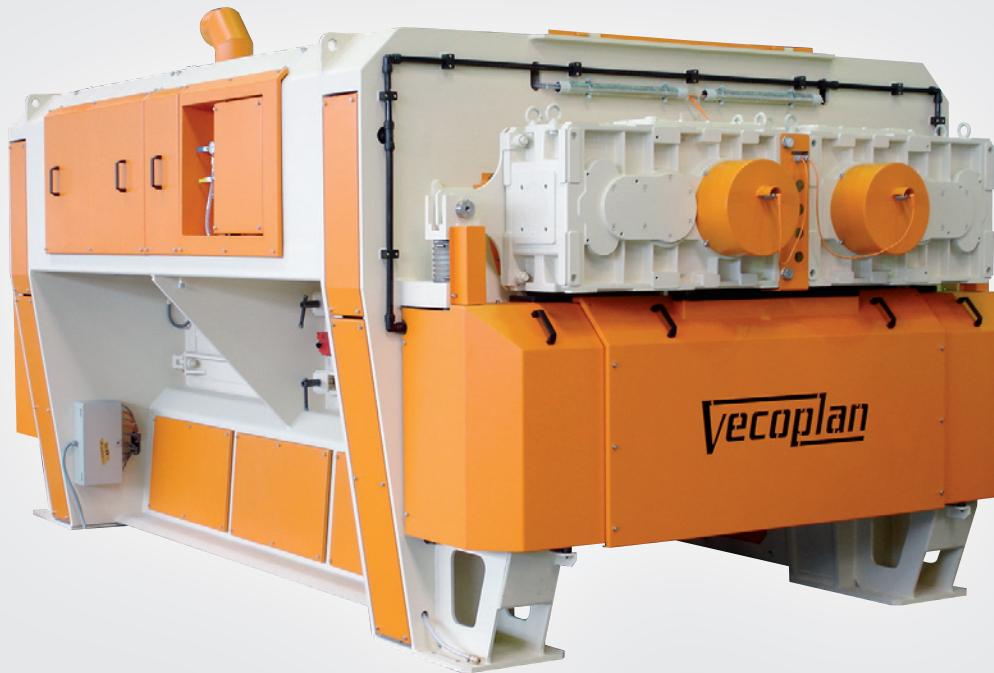


# VVZ/VNZ 210 – 300 (L)

TECHNOLOGY FOR A SUSTAINABLE TOMORROW



Shredding



## APPLICATION

For difficult materials with foreign-parts and tramp metal such as pallets, boxes, cable drums, demolition timber, pieces of furniture, chipboard, domestic or commercial waste and refuse derived fuels.

**Vecoplan**<sup>®</sup>

# VVZ/VNZ 210 – 300 (L)

TECHNOLOGY FOR A SUSTAINABLE TOMORROW

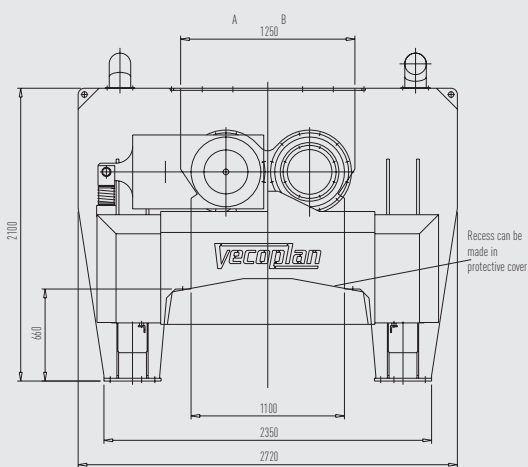


Shredding

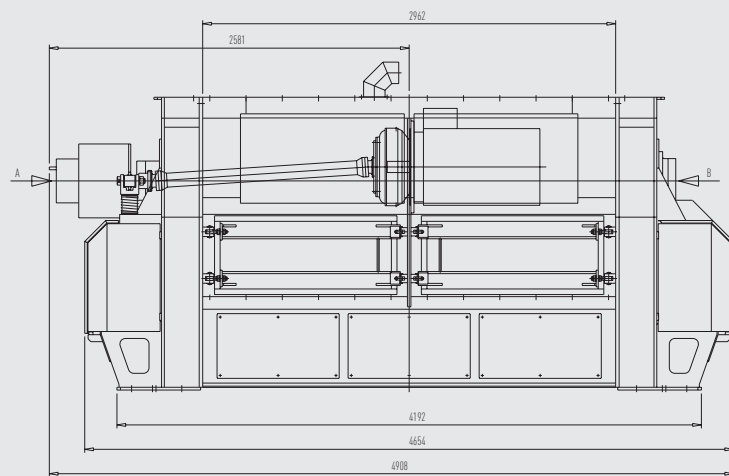
Example

## VNZ 300 L

Front view



Side view



### DETAILS

|                    |     | VVZ 210 (L)                          | VNZ 210 (L)                          | VVZ 300 (L)                          | VNZ 300 (L)                          |
|--------------------|-----|--------------------------------------|--------------------------------------|--------------------------------------|--------------------------------------|
| Infeed opening     | mm  | 1250 x 2100                          | 1250 x 2100                          | 1250 x 2962                          | 1250 x 2962                          |
| Rotor dimensions   | mm  | 2100 x 500                           | 2100 x 500                           | 2962 x 500                           | 2962 x 500                           |
| Number of tools    | qty | 2 x 19                               | 2 x 24 (48)                          | 2 x 27                               | 2 x 34 (68)                          |
| Rotor speed        | rpm | 75 - 95                              | 75 - 165                             | 75 - 95                              | 75 - 165                             |
| Motor power        | kW  | 2 x 55 - 90*                         | 2 x 75 - 132*                        | 2 x 55 - 90*                         | 2 x 90 - 132*                        |
| Capacity           | t/h | 5 - 20*                              | 5 - 20*                              | 5 - 30*                              | 5 - 30*                              |
| Weight approx.     | t   | 13 (14)                              | 13 (14)                              | 17 (18)                              | 17 (18)                              |
| Overall dimensions | cm  | 389 x 272 x 210<br>(455 x 272 x 210) | 389 x 272 x 210<br>(455 x 272 x 210) | 428 x 272 x 210<br>(491 x 272 x 210) | 428 x 272 x 210<br>(491 x 272 x 210) |

Subject to technical changes without notice / Dated: 05/2010

\* Depending on input material and screen perforation