

HR 45

TECHNOLOGY FOR A SUSTAINABLE TOMORROW



Shredding



APPLICATION

For re-shredding waste products previously processed in the timber industry, such as log end pieces, demolition waste, etc.
The wood chips produced are used as fuel in heating installations in order to generate process heat.

Vecoplan[®]

HR 45

TECHNOLOGY FOR A SUSTAINABLE TOMORROW

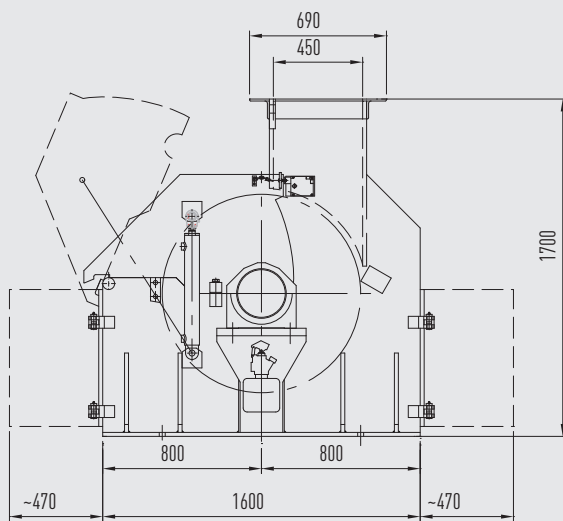


Shredding

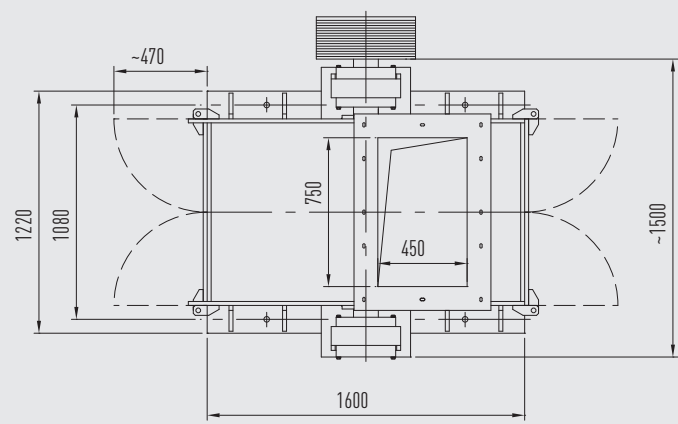
Example

HR 75/45

Side view



Plan view



DETAILS

		HR 75/45	HR 125/45
Infeed opening	mm	750 x 450	1250 x 450
Rotor diameter	mm	1000	1000
Number of chipping knives	qty	2 - 4	2 - 4
Rotor speed	rpm	450 - 1000	450 - 1000
Chipping length	mm	5 - 30 *	5 - 30 *
Required motor power	kW	110 - 200	160 - 250
Max. capacity	stere/h	45 *	75 *
Weight approx.	kgs	5800	8500

Subject to technical changes without notice / Dated: 01/2010

Also available as SR and RHR versions.

* Depending on input material and screen perforation