

KKF 2K-U

TECHNOLOGY FOR A SUSTAINABLE TOMORROW



Conveying



APPLICATION

Chain conveyors with endless chains with feed dogs in closed troughs are suitable for the transport of bulky material.

This version of Vecoplan-chain conveyors transports the material in the lower run by means of two inside conveying chains with 11.2 t, 16 t or 22.4 t breaking load. The chains run in the return on low-wear chain guide rails and are additionally covered in the feeding area so that no material can get into the chain.

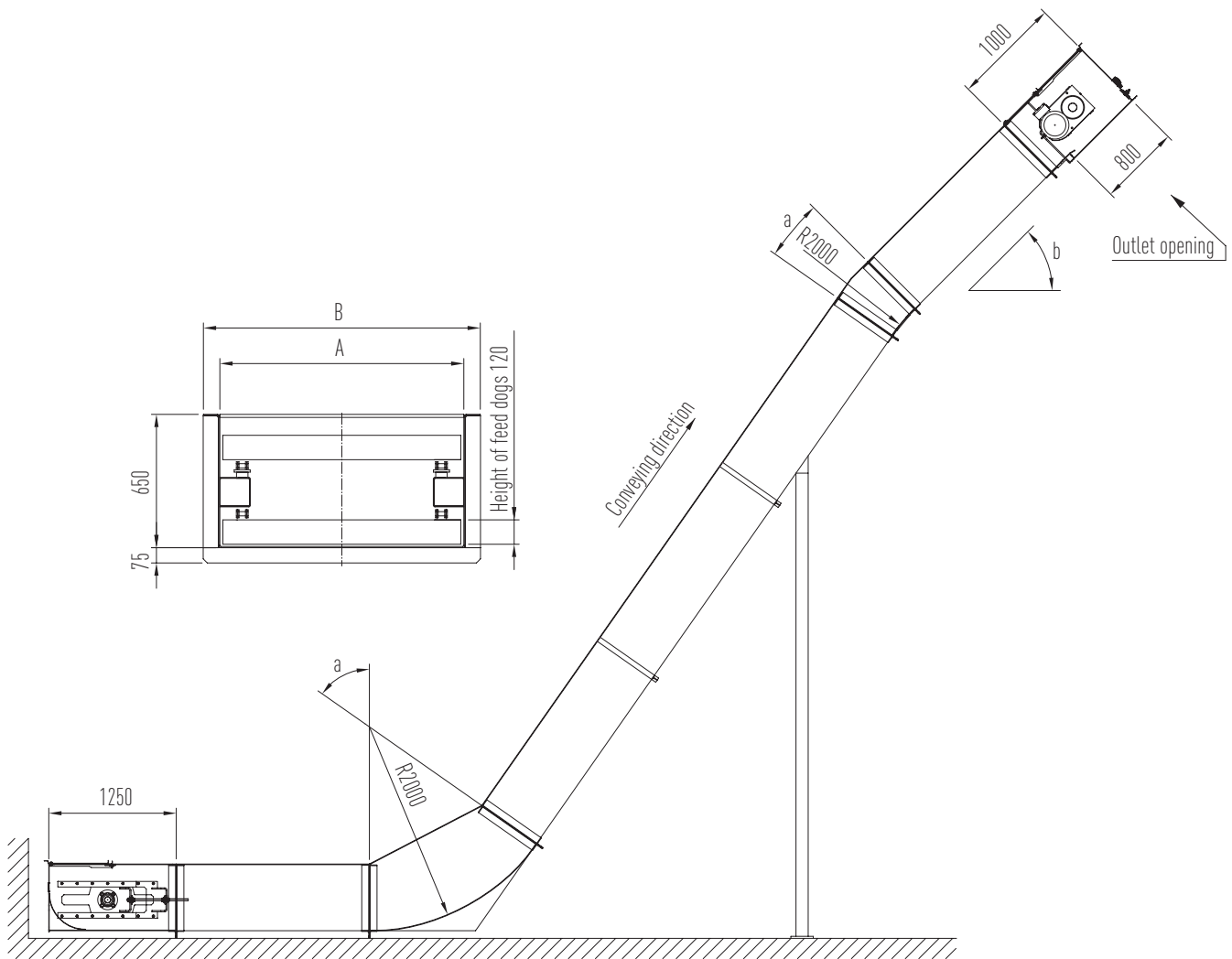
By use of upper and lower elbows the course of chain conveyors is almost on choice. Motorical or pneumatical slides allow additional user-defined discharge positions.

Vecoplan[®]

KKF 2K-U

Example

KKF 2K-U



DETAILS

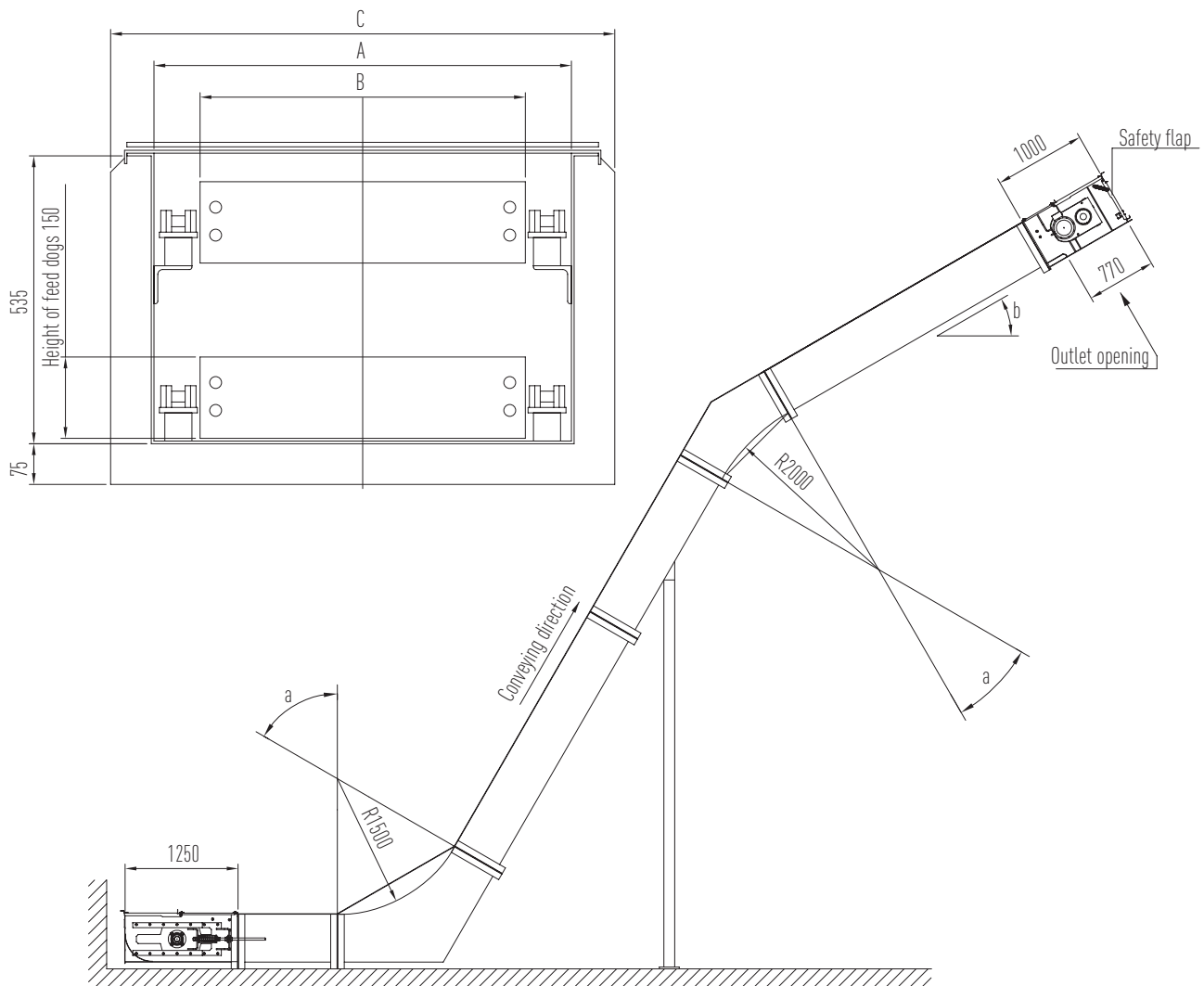
		KKF 800-2K-U	KKF 1000-2K-U	KKF 1200-2K-U
Width of trough A	mm	800	1000	1200
Total width B	mm	930	1130	1330
Conveying capacity approx.*	m ³ /h	135	170	205

Subject to technical changes without notice / Dated 01/2010

* at conveying speed of 24 m/min. and horizontal course

Example

KKF 2K-U



DETAILS

		KKF 670-2K-U	KKF 820-2K-U	KKF 970-2K-U	KKF 1150-2K-U
Width of trough A	mm	670	820	970	1150
Width of feed dogs B	mm	490	640	790	970
Total width C	mm	830	980	1130	1310
Conveying capacity approx.*	m ³ /h	110	145	180	220

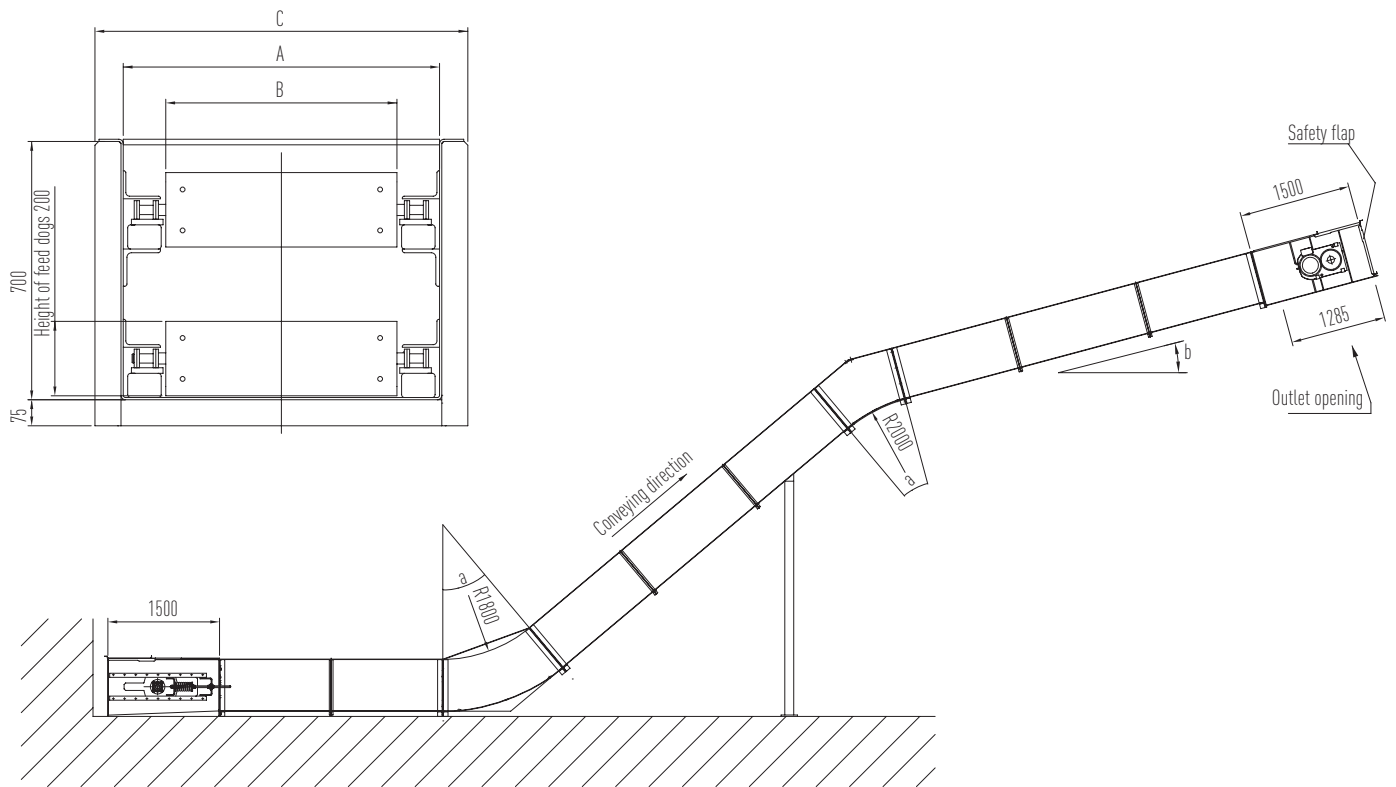
Subject to technical changes without notice / Dated 01/2010

* at conveying speed of 24 m/min. and horizontal course



Example

KKF 2K-U



DETAILS

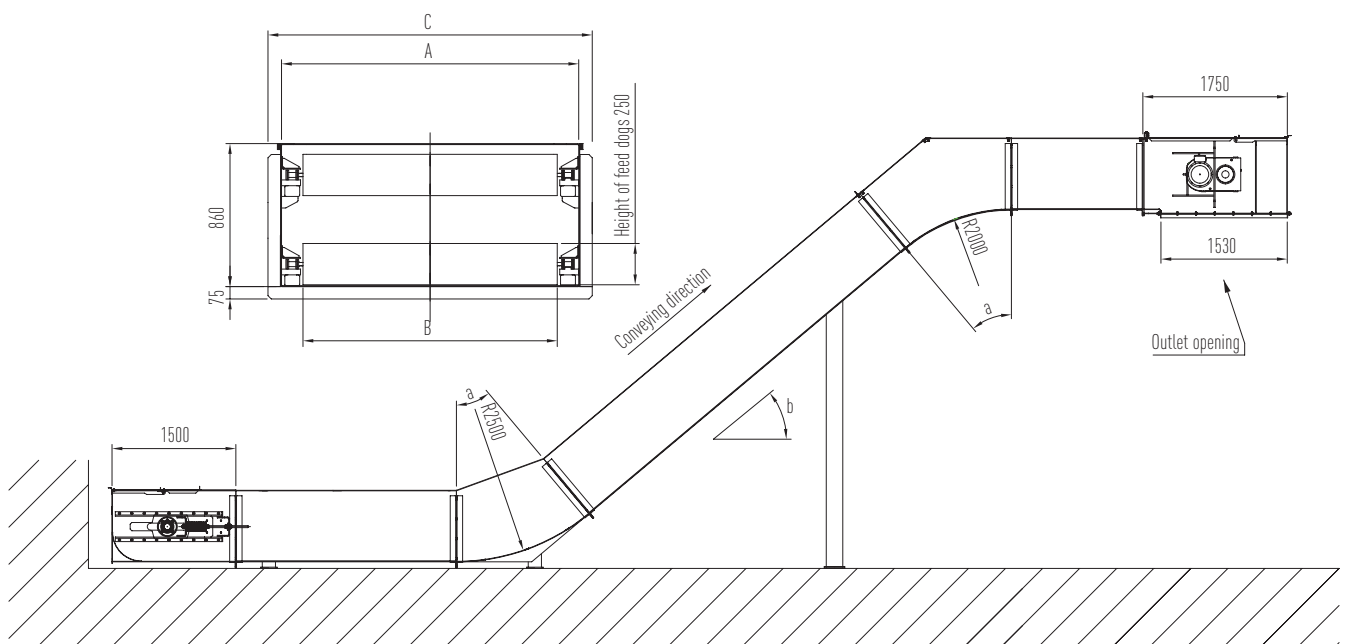
		KKF 850-2K-U	KKF 1050-2K-U	KKF 1250-2K-U	KKF 1450-2K-U
Width of trough A	mm	850	1050	1250	1450
Width of feed dogs B	mm	620	820	1020	1220
Total width C	mm	980	1180	1380	1580
Conveying capacity approx.*	m ³ /h	185	240	295	350

Subject to technical changes without notice / Dated 01/2010

* at conveying speed of 24 m/min. and horizontal course

Example

KKF 1800-2K-U



DETAILS

		KKF 1800-2K-U
Width of trough A	mm	1800
Width of feed dogs B	mm	1540
Total width C	mm	1965
Conveying capacity approx.*	m ³ /h	560

Subject to technical changes without notice / Dated 01/2010

* at conveying speed of 24 m/min. and horizontal course

KKF 2K-U

TECHNOLOGY FOR A SUSTAINABLE TOMORROW



Conveying



KKF 800 / 1000 / 1200-2K-U

Chain conveyors with endless chains with feed dogs in closed troughs are suitable for the transport of bulky material.

This version of Vecoplan-chain conveyors transports the material in the lower run by means of two inside conveying chains with 11.2 t breaking load. The chains run in the return on low-wear chain guide rails and are additionally covered in the feeding area so that no material can get into the chain.

By use of upper and lower elbows the course of chain conveyors is almost on choice. Motorical or pneumatical slides allow additional user-defined discharge positions.



KKF 670 / 820 / 970 / 1150-2K-U

Chain conveyors with endless chains with feed dogs in closed troughs are suitable for the transport of bulky material.

This version of Vecoplan-chain conveyors transports the material in the lower run by means of two outside conveying chains with 11.2 t breaking load. The chain runs on low-wear chain guide rails that are entirely covered in the feeding area so that no material can get into the chain.

By use of upper and lower elbows the course of chain conveyors is almost on choice. Motorical or pneumatical slides allow additional user-defined discharge positions.



KKF 850 / 1050 / 1250 / 1450-2K-U

This version of Vecoplan-chain conveyors transports the material in the lower run by means of two outside conveying chains with 16 t breaking load. The chains run on low-wear chain guide rails that are entirely covered in the feeding area so that no material can get into the chain.

By use of upper and lower elbows the course of chain conveyors is almost on choice. Motorical or pneumatical slides allow additional user-defined discharge positions.



KKF 1800-2K-U

Chain conveyors with endless chains with feed dogs in closed troughs are suitable for the transport of bulky material.

This version of Vecoplan-chain conveyors transports the material in the lower run by means of two outside conveying chains with 22.4 t breaking load. The chains run on low-wear chain guide rails that are entirely covered in the feeding area so that no material can get into the chain. Due to its robust and wear-resistant design this type of Vecoplan conveyor is particularly suitable for extreme conveying capacities.